

Lead Service Line Survey Information

LaVale Sanitary Commission needs your help to complete an inventory of all water service line pipes connected to the public water system.

Check your home for lead pipes, then complete our online survey to tell us what you find, no matter what type of pipes you find!

Why does the LaVale Sanitary Commission need information about the water service pipe material in my home?

EPA Regulatory Changes for Drinking Water

The U.S. Environmental Protection Agency (EPA) first established a lead and copper rule in 1991 to help reduce exposure and associated health effects from lead in drinking water. EPA revised the rule in 2021, requiring action by water service providers across the country. By 2024, all water utilities are required to determine where lead pipes exist in their systems, including the pipes on the customer side that connect to the public system.

LaVale Sanitary Commission has an inventory of our underground infrastructure, which helps us manage maintenance and prioritization of repair and replacement of pipes. We need the cooperation of our customers to help us complete the inventory, showing all private side connections and pipe materials.

The information provided will help us meet regulatory requirements, as well as apply for infrastructure grants available in the future!

We Need Your Help

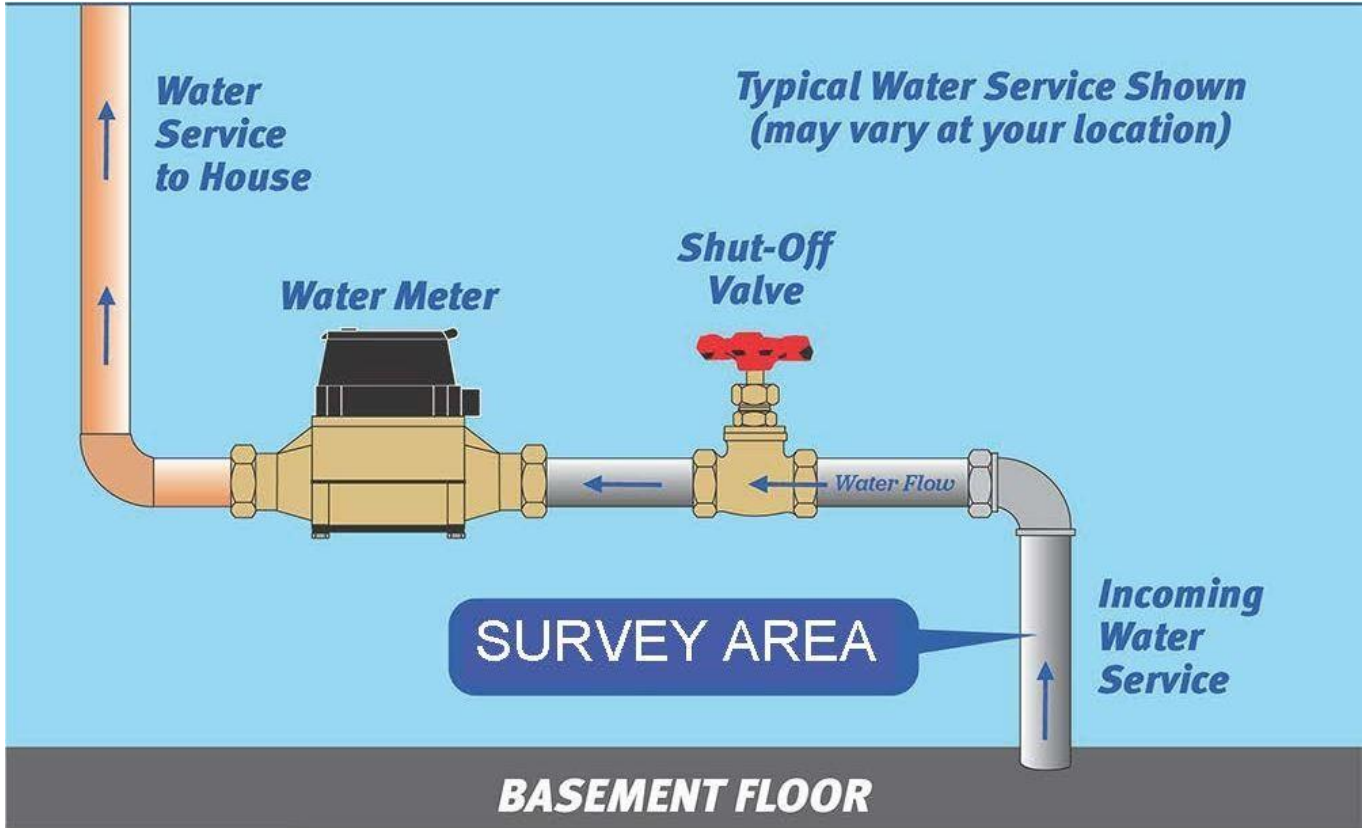
Please complete our online **Service Line Survey** to inform us of the material used for the water service line coming into your property. It is the pipe connected to your water meter. ***If you are not sure of the material, use the Steps to Check Your Service Line below. Then complete the survey.***

Steps to Check Your Service Line

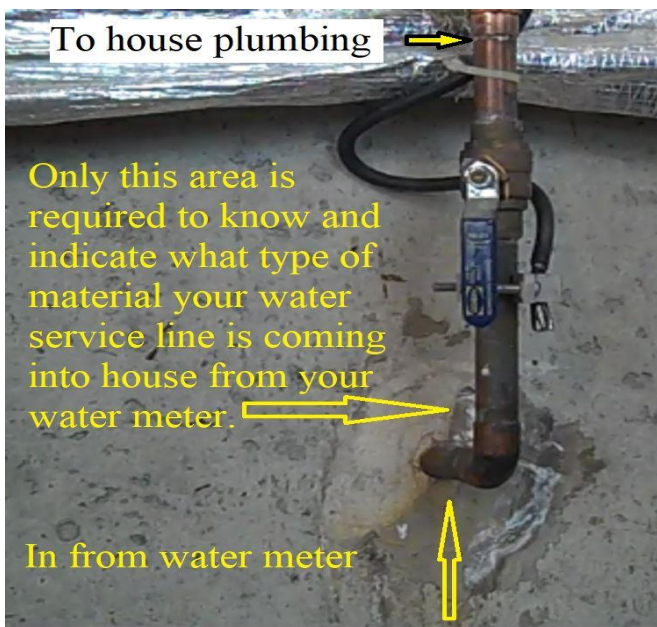
Materials Needed: Key or coin, strong magnet, phone, or tablet (to take picture)

- Find the water meter on your property. This can be in a basement, crawl space or other exterior wall.
- Look for the pipe that comes through the wall of your home and connects to the meter.
- Use a key or coin to gently scratch the pipe like you would scratch a lottery ticket. If the pipe is painted, use sandpaper to expose the metal first.
- Place the magnet on the pipe to see if it sticks to the pipe.
- Determine your pipe material.

- Take a picture of the service line (incoming water service).
- Complete the **SURVEY**.



NOTE: Your meter may be inside the building (picture above) or outside the building (picture below). For this survey, look for the **incoming water service** entering the wall or floor and before the shut-off valve.



Helpful tips to determine your pipe material

IF YOUR PIPE IS COPPER:

The pipe may appear dull brown on the outside but will be the color of a bright penny if gently scratched. Magnet won't stick.



IF YOUR PIPE IS LEAD:

The pipe will appear dull and soft but will turn a shiny silver color when scratched. Magnet won't stick.



IF YOUR PIPE IS GALVANIZED STEEL:

The scratched area will remain a dull gray. If you have a galvanized steel pipe, you may still have a lead gooseneck on your service line. Magnet will stick.

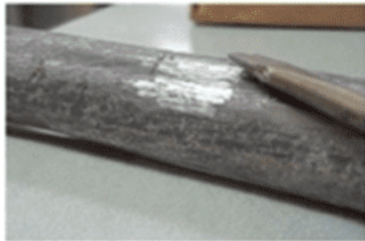


IF YOUR PIPE IS PLASTIC OR PVC:

If the service line is blue, white, or black, does not appear to be any of the other materials listed above, and a magnet will not stick to the surface, your service line is most likely plastic.



MORE TIPS:



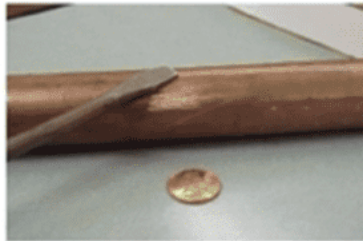
Lead Pipes

The Scratch Test

If the scraped area is shiny and silver, your service line is lead.

The Magnet Test

A magnet will not stick to a lead pipe.



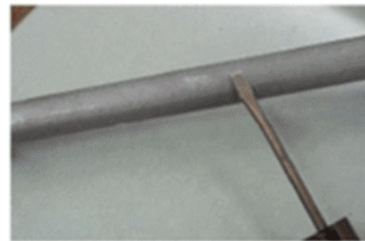
Copper Pipes

The Scratch Test

If the scraped area is copper in color, like a penny, your service line is copper.

The Magnet Test

A magnet will not stick to a copper pipe.



Galvanized Pipes

The Scratch Test

If the scraped area remains a dull gray, your service line is galvanized steel.

The Magnet Test

A magnet sticks to a galvanized pipe.